

DOLPHICAM2 PLATFORM



The dolphicam2 is capable of high-resolution imaging and precise measurements for a wide range of material types including composites, metals and multi materials.

With a straightforward, quick to deploy, user-friendly system, technicians of all experience levels can generate analysis-ready images of materials in real time for quick decision making.



SIZE AND WEIGHT

Weight	2.65 kg
Size (including integrated neck strap)	300 x 188 x 70 mm
Size (Black Box)	200 x 130 x 32 mm
Size (Toughpad)	270 x 188 x 19 mm

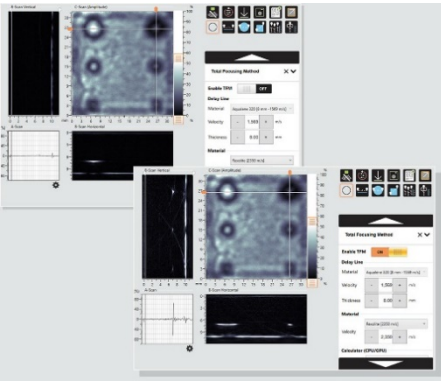
TECHNICAL DETAILS

Transducer ports	2x USB C
Other connections	Ethernet
Battery	6-8 hours
Ingress protection	IP65
PC/Host port	USB C

The Black Box itself is the heart of the system, driving the TRM while connecting to the Toughpad which runs and displays the software.

The unit has been tested to withstand drops from 1.3 meters. It has IP65 ingress protection and long battery life (6-8 hours in normal use).

The Toughpad is equipped with an Intel i5 CPU, 8GB of RAM and a 256GB SSD.



For maximum image quality we also provide Total Focusing Method (TFM) reconstructions, with TFM images accessible both during the acquisition itself, and on previously acquired Full Matrix Capture (FMC) data files.

SPECIFICATION

Data transfer rate	Up to 3.2 Gbit/s depending on transducer settings
Effective data acquisition rate	30 full data sets (128x128 A-scans) per second with typical settings
Data processing	Low pass filter, data sampling, Total Focusing Method
Visualization	Single element signals (A-scans), vertical cross sections (B-scans), horizontal cross sections and material thickness mappings (C-scans) and 3D.
Adjustable settings	Measurement unit, material depth, gating, material sound velocity, transmit pulse shape, gain, filtering and averaging, time corrected gain, color palette
Statistical data	Mean (+Std. Deviation), Median, and Mode
Data file format	Open, HDF5 based file format
Time Corrected Gain (TCG)	0 to 10 dB/μs
Digital Gain	+50dB
Averaging	1 - 16
Delay	1 - 82 μs
Depth	1 - 120 mm @ 6,000 m/s
Velocity	100 - 20.000 @ 6,000 (list of velocity)
Gates	3 separate gates
Amplitude threshold	Threshold for each gate
Capture method (for C-scan)	Max Absolute / Negative / Positive
A/B Scan Mode (RF)	Full, Absolute. Envelope
Color palettes	(Jet, gray, grav-inv, autumn bone, winter, rainbow, ocean, summers, spring, hsv, pink, hot, customizable)
Image filter	None, gaussian, median



dolphitech



**Inspection
Technology**

+31(0)71 - 747 0110
www.daconbv.nl
info@daconbv.nl

YOUR RELIABLE ADVISER AND PARTNER FOR VISUAL INSPECTION EQUIPMENT